

PIR - PSP Interface Circuit Calibration Instruments

Instrument	Model	Serial Number	Cal Date
Voltage Standard	MV106	EDC14456	2008-Oct-07
HP (Agilent) Multimeter	HP34401A	US36043788	2008-Sep-15

Technician

David O'Gorman

Date

24-Feb-09

## Board B Ch1 (Case)

	VRb1	lrb1	lcase	Deviance	VrCase	Rcase	RcaseSet	Error
0	0.87273	8.72461E-05	8.72457E-05	0.0000	2.5727	29488	29490	6.78196E-05
1	1.0299	0.000102958	0.000102954	0.0000	2.4156	23463	23460	-0.000127877
2	1.19718	0.000119681	0.000119666	0.0001	2.2484	18789	18790	5.32198E-05
3	1.3714	0.000137098	0.000137098	0.0000	2.0743	15130	15130	0
4	1.5482	0.000154772	0.00015478	0.0000	1.8976	12260	12260	0
5	1.7227	0.000172217	0.000172208	0.0001	1.7233	10007.1	10000	-0.00071
6	1.8944	0.000189382	0.000189373	0.0000	1.5517	8193.9	8194	1.22041E-05
7	2.0575	0.000205687	0.000205681	0.0000	1.3888	6752.2	6752	-2.96209E-05
8	2.2107	0.000221002	0.000220996	0.0000	1.2357	5591.5	5592	8.94134E-05

Rb1	
10003.09	Ohms

scope zero	
Scope Zero	0.113
Reading	10003.2
Rb1 Value	10003.087

Cal Date
1/27/2009

Testing at  
12.078 Supply Volts

Vo  
3.4475

Board B Ch2 (Hemisphere)

	VRb2	lrb2	lcase	Deviance	VrCase	Rcase	RcaseSet	RsetError
0	0.87287	8.72304E-05	8.7233E-05	0.0000	2.5725	29490	29490	0
1	1.03013	0.000102946	0.00010295	0.0000	2.4152	23460	23460	0
2	1.19724	0.000119646	0.000119649	0.0000	2.2482	18790	18790	0
3	1.3716	0.000137071	0.000137072	0.0000	2.0739	15130	15130	0
4	1.5484	0.00015474	0.000154747	0.0000	1.8972	12260	12260	0
5	1.723	0.000172188	0.000172174	0.0001	1.7227	10005.6	10000	-0.00056
6	1.8945	0.000189327	0.000189315	0.0001	1.5513	8194.3	8194	-3.66122E-05
7	2.0576	0.000205627	0.000205616	0.0001	1.3884	6752.4	6752	-5.92417E-05
8	2.2108	0.000220937	0.000220921	0.0001	1.2353	5591.6	5592	7.15308E-05

Rb2	
10006.49	Ohms

scope zero	
Scope Zero	0.109
Reading	10006.6
Testing at	Rb2 Value
12.073 Supply Volts	10006.491

Cal Date
1/27/2009

Vo  
3.4473

Board A Ch1 (Case)

	VRA1	Ira1	Icase	Deviance	VrCase	Rcase	RcaseSet	Error
0	0.87964	8.79675E-05	8.79836E-05	-0.0002	2.5949	29493	29490	-0.000101729
1	1.03841	0.000103845	0.000103858	-0.0001	2.4362	23457	23460	0.000127877
2	1.207	0.000120705	0.000120701	0.0000	2.2681	18791	18790	-5.32198E-05
3	1.3826	0.000138266	0.000138288	-0.0002	2.0923	15130	15130	0
4	1.561	0.000156106	0.000156126	-0.0001	1.9141	12260	12260	0
5	1.7374	0.000173747	0.000173783	-0.0002	1.7379	10000.4	10000	-4E-05
6	1.91	0.000191008	0.00019104	-0.0002	1.5654	8194.1	8194	-1.22041E-05
7	2.0745	0.000207458	0.000207488	-0.0001	1.401	6752.2	6752	-2.96209E-05
8	2.229	0.000222909	0.000222951	-0.0002	1.2467	5591.8	5592	3.57654E-05

Ra1	
9999.6	Ohms

Cal Date
2/24/2009

Testing at  
13.535 Supply Volts

Vo  
3.4774

probe zero 0.155  
Measured Value 9997.4  
Actual Ra1 9997.245

Board A Ch2 (Hemisphere)

	VRa2	Ira2	Ihemi	Deviance	Vrhemi	Rhemi	RhemiSet	Error
0	0.88026	8.79784E-05	8.79722E-05	0.0001	2.5943	29490	29490	0
1	1.0389	0.000103834	0.000103824	0.0001	2.4357	23460	23460	0
2	1.2075	0.000120685	0.000120672	0.0001	2.2673	18789	18790	5.32198E-05
3	1.3833	0.000138255	0.000138239	0.0001	2.0917	15131	15130	-6.60939E-05
4	1.5616	0.000156076	0.000156064	0.0001	1.9135	12261	12260	-8.15661E-05
5	1.7382	0.000173726	0.00017372	0.0000	1.7371	9999.4	10000	6E-05
6	1.9107	0.000190967	0.000190954	0.0001	1.5647	8194.1	8194	-1.22041E-05
7	2.0752	0.000207408	0.000207396	0.0001	1.4004	6752.3	6752	-4.44313E-05
8	2.2297	0.000222849	0.000222822	0.0001	1.246	5591.9	5592	1.78827E-05

Ra2	
10005.41	Ohms

Cal Date
2/24/2009

Testing at  
13.535 Supply Volts

Vo  
3.4774

probe zero 0.19  
Measured Value 10005.6  
Actual Ra2 10005.41

65095 Backup Strain Gauge

set to gain of 500

Test Voltage Supply 12.204

Cal Date

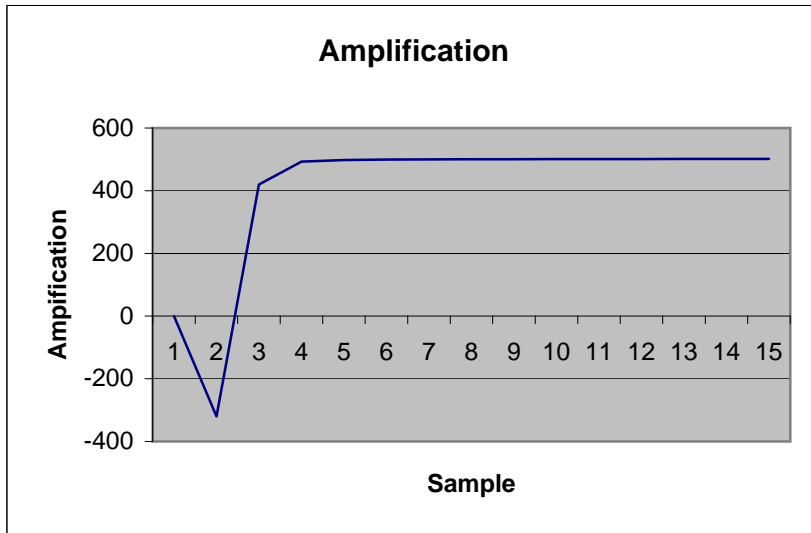
Mar 16 2009

Vin (Set) Vout Amplification

0	-0.0082	0
0.00001	-0.0032	-320
0.0001	0.042	420
0.001	0.493	493
0.002	0.9962	498.1
0.003	1.4983	499.4333
0.004	2.0004	500.1
0.00495	2.4775	500.5051
0.005	2.5027	500.54
0.006	3.0049	500.8167
0.007	3.5071	501.0143
0.008	4.0093	501.1625
0.009	4.5114	501.2667
0.0095	4.7627	501.3368
0.00975	4.8882	501.3538
		500.5117

(In Storage On Vessel)

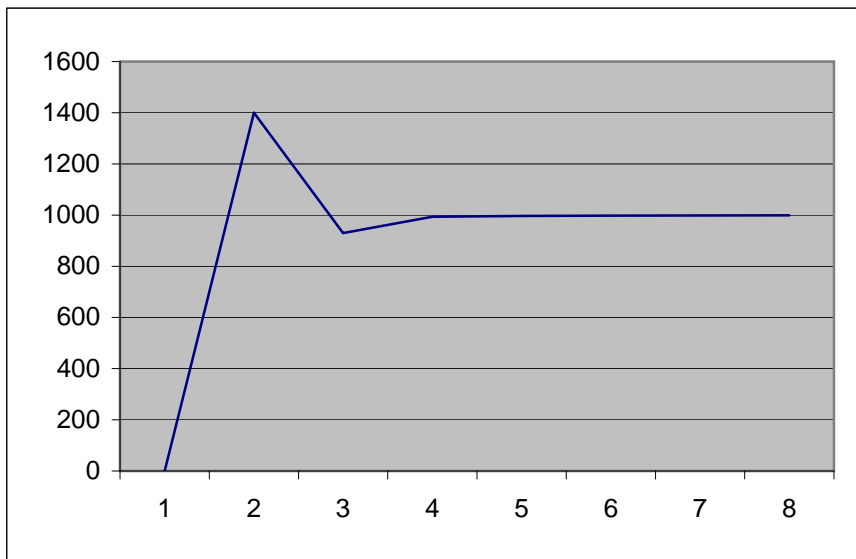
Strain Gauge Amp 65095



65096 PIR Strain Gauge		
Vin (Set)	Vout	Amplification
0	-0.0064	0
0.00001	0.014	1400
0.0001	0.093	930
0.001	0.99358	993.58
0.002	1.9938	996.9
0.003	2.994	998
0.004	3.9941	998.525
0.00495	4.9444	998.8687
		997.1747

Cal Date
1/27/2009

Strain Gauge Amp 65096



65097 PSP Strain Gauge

Vin (Set)	Vout	Amplification
0	0.0162	0
0.00001	0.021	2100
0.0001	0.0663	663
0.001	0.518	518
0.002	1.0198	509.9
0.003	1.5217	507.2333
0.004	2.0235	505.875
0.00495	2.5001	505.0707
0.005	2.5244	504.88
0.006	3.0266	504.4333
0.007	3.5286	504.0857
0.008	4.031	503.875
0.009	4.5328	503.6444
0.0095	4.7835	503.5263
0.00975	4.908	503.3846
		505.0826

Cal Date
1/27/2009

Strain Gauge Amp 65097

