

CC1601RL Underway Data Processing Notes

No information on UW system flow was available.

The available variables from these files are:

COG – course over ground (deg)

SOG – ship speed over ground (knots)

WindSpeed – wind speed (m/sec)

WindDir – wind direction (deg)

AirTemp – air temperature (deg C)

AtmPres – atmospheric pressure (mb)

RelHum – relative humidity (% saturation)

TSG_Temp – water temperature measured by the Ruben Lasker TSG SBE 45 unit (deg C). No data are available for the first few days.

TSG_Sal – water salinity measured by the Ruben Lasker TSG SBE 45 unit (PSU). No data are available for the first few days.

ChlFluor – chlorophyll fluorescence (volt). The instrument must have malfunctioned. No meaningful correlation between ChlFluor and CalCOFI bottle Chl values was observed.

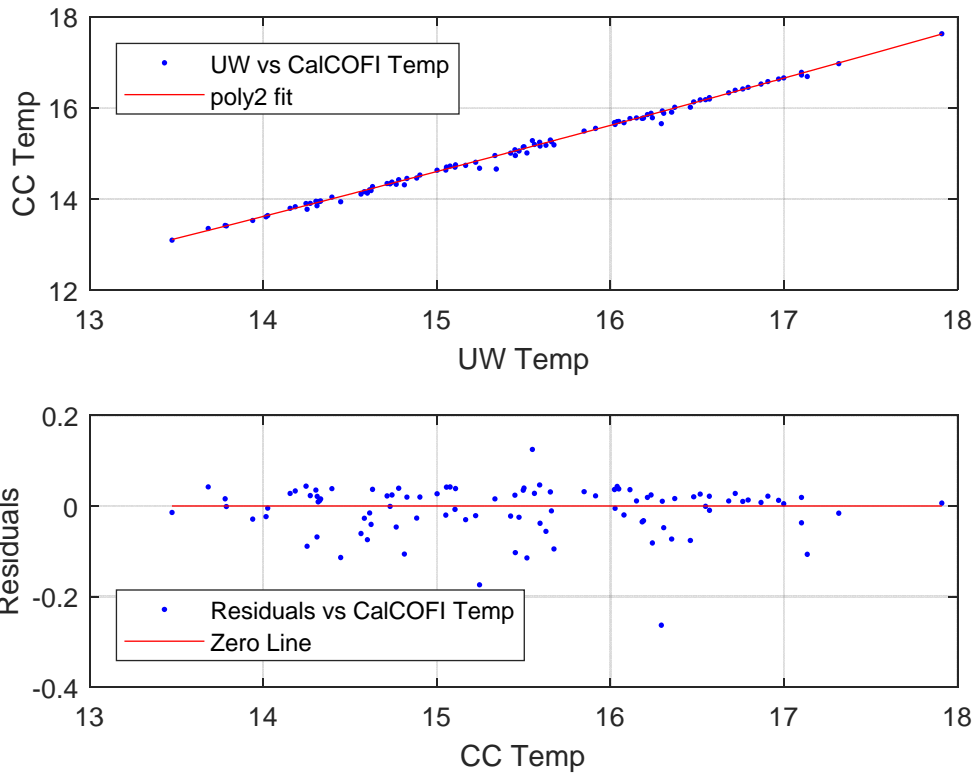
Derived variables are:

Pred_Temp – temperature derived from calibrations of TSG_Temp vs. CalCOFI 0 to 12 m bottle temperatures (deg C)

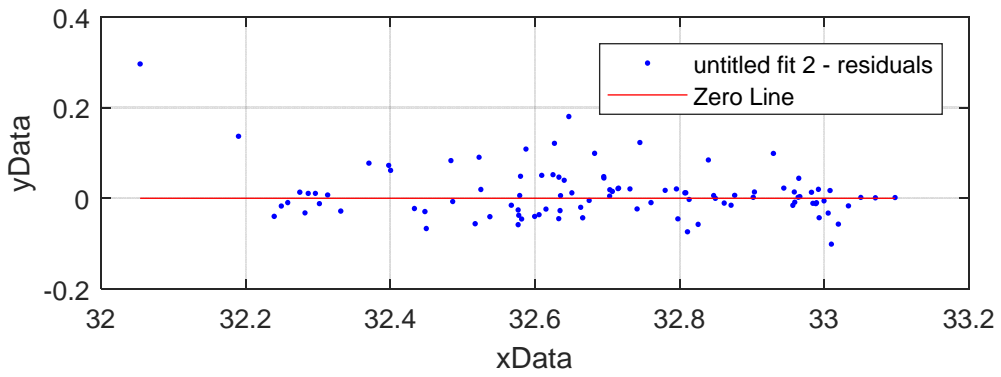
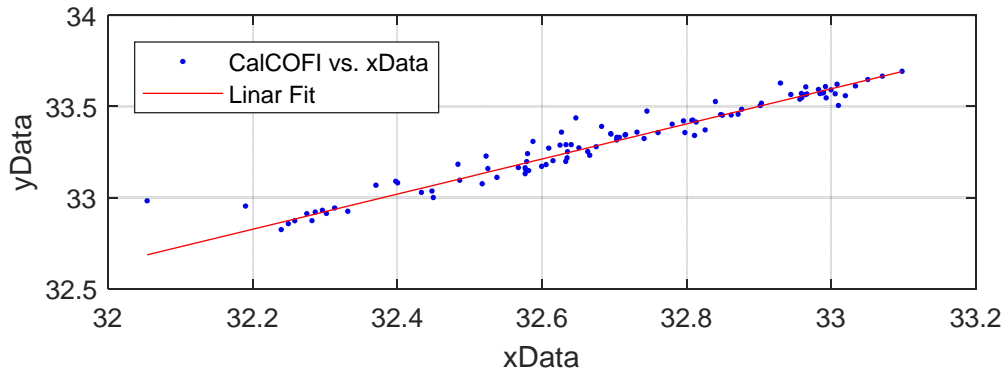
Pred_Sal – salinity derived from calibrations of TSG_Sal vs. CalCOFI 0 to 12 m bottle salinity (PSU)

Pred_ChI – chlorophyll derived from calibrations of ChlFluor vs. CalCOFI 0 to 12 m bottle Chl a (ug-Chl/L).
All values are set to NaN.

TSG_Temp Calibration: The calibration is very good. Apparently there were no problems with the flow system.



TSG_Sal Calibration: The calibration is good. The TSG_Cond sensor may be a bit unstable.



ChlFluor Calibration: The calibration was not possible. The sensor malfunctioned.

