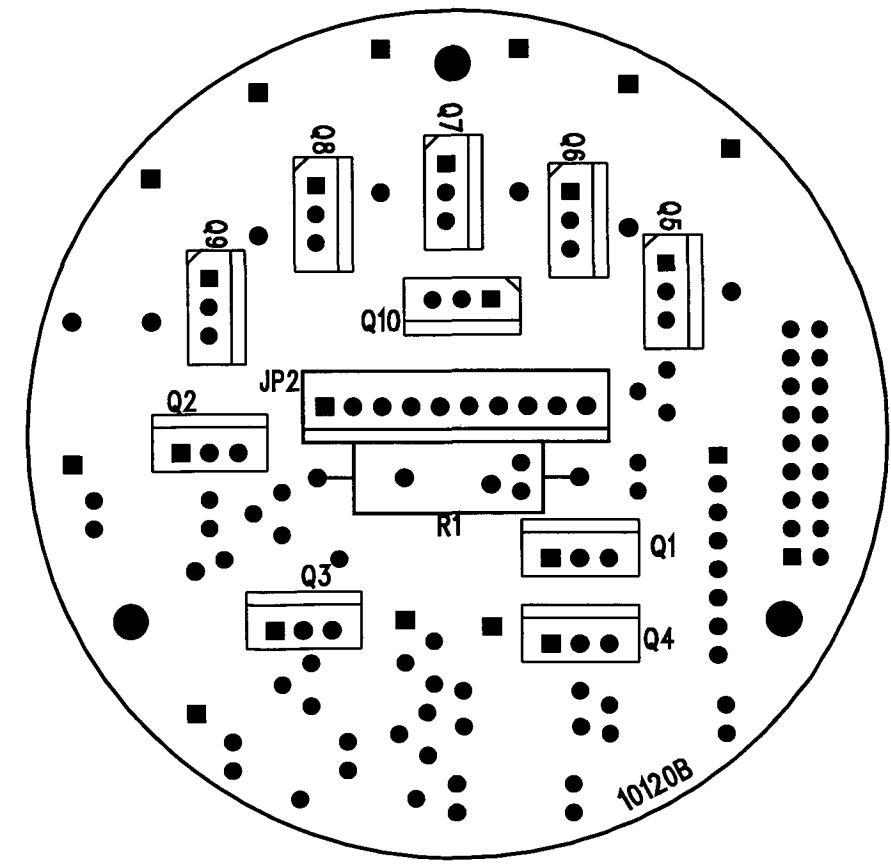
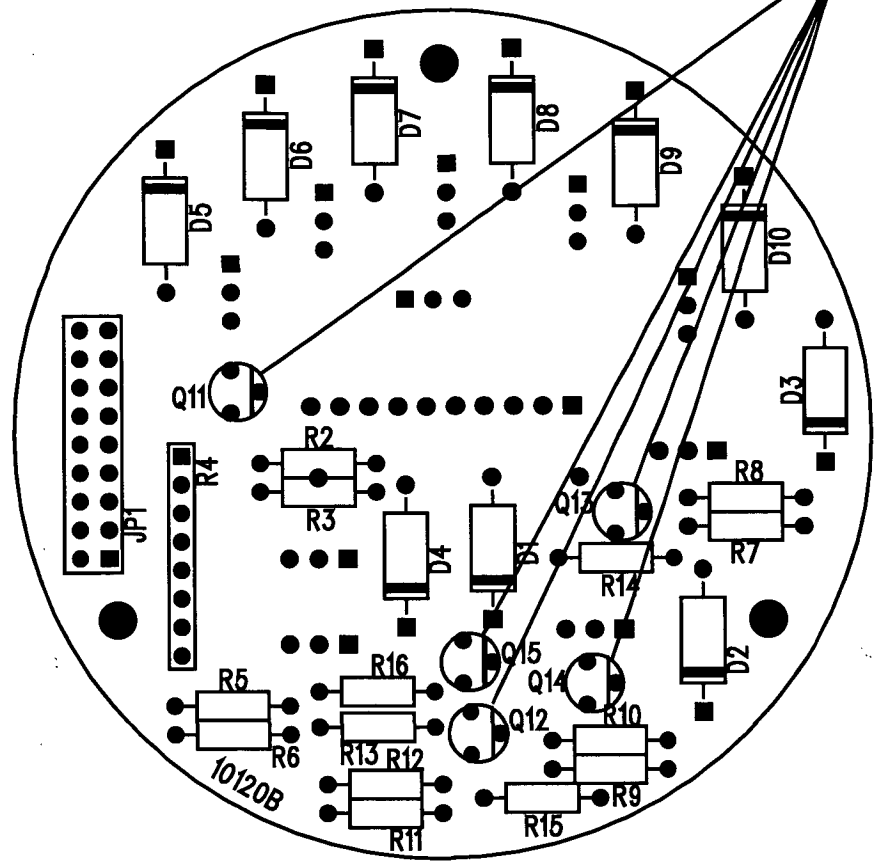


DATE	SYM	REVISION RECORD	AUTH.	DR.	CK.
1/94	B	PCB 10120A			
5/96	C	ADD R13,R14,R15,R16	JB	D6	
4/97	D	ECN 456: NEW PCB		D6	

MOUNT Q11 THRU Q15
LESS THAN 0.3" TOTAL HEIGHT



SLB PRINTED ON 12:55:20 09 MAY 1996

PART NUMBER. DESCRIPTION..... QPA..... ITM REF DESIG.....
NBR

80710	CAROUSEL SOLENOID DRIVER, /DWG 40659C		
13002	DIODE, 1N4005, HI-VOLTAGE	10.0000	D1 D2 D3 D4 D5 D6 D7 D8 D9 D10
13038	XISTOR, 2N4401	5.0000	Q11 Q12 Q13 Q14 Q15
13048	FET, MTP12P10, MOTOROLA / IRF9530 SILICONIX	4.0000	Q1 Q2 Q3 Q4
13078	FET, IRF520 POWER MOSFET, INT'L RECTIFIER	6.0000	Q5 Q6 Q7 Q8 Q9 Q10
15083	RES, 6.04K OHM, 1%, 1/4 W	4.0000	R5 R7 R9 R11
15099	RES, 23.7K OHM, 1%, 1/4 W	4.0000	R6 R8 R10 R12
15165	RES, 1K OHM, 5%, 1/4 W	1.0000	R2
15170	RES, 4.7K OHM, 5%, 1/4 W	4.0000	R13 R14 R15 R16
15172	RES, 10K OHM, 5%, 1/4 W	1.0000	R3
15252	RES, 1 OHM, 3 W, 1% OHMITE 83F1R0	1.0000	R1
15292	RES-NET, 10K X 4, SIP, CSC08A03103G	1.0000	R4
17070	HEADER, 10 PIN, MOLEX 6373-22-11-2102	1.0000	JP2
17713	HEADER, 18 PIN (.375") SAMTEC BBD109GA	1.0000	JP1
21141	PCB, CAROUSEL SOLINOID DRVR, /DWG 10120A	1.0000	PCB

TOLERANCES	SEA-BIRD ELECTRONICS, INC		
FRACTIONAL	P/N 80710	SCALE	DRAWN BY DJM
DECIMAL	TITLE		
ANGULAR	DATE 12/16/93	DRAWING NUMBER 40659	REV. D
	SBE 32 SOLENOID DRIVER		
	APPROVED BY		