

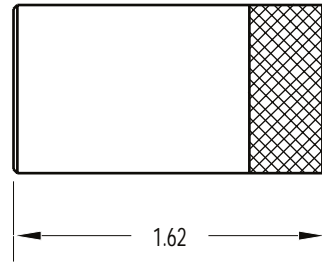
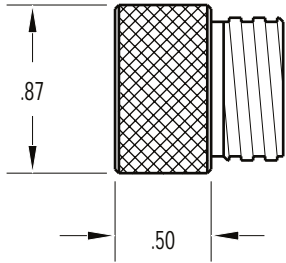


MALE

FEMALE

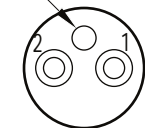
MCDLS-M

MCDLS-F



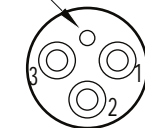
CONTACT  
CONFIGURATION  
(MP FACE VIEW)

GUIDE PIN



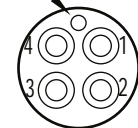
2 CONTACT  
W/ GUIDE PIN

GUIDE PIN



3 CONTACT  
W/ GUIDE PIN

GUIDE PIN



4 CONTACT  
W/ GUIDE PIN

MOUNTING TORQUE FOR MCIL/BH-FS/MP	not to exceed 100 in/lbs
MATED PRESSURE RATING (psi)	10,000
DUMMY PLUG FOR MCIL/BH-FS	MCDC-* -MP
DUMMY PLUG FOR MCIL/BH-MP	MCDC-* -FS
* Specify number of contacts.	

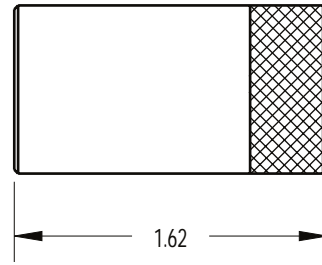
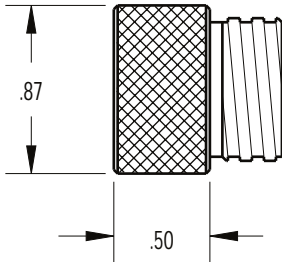


MALE

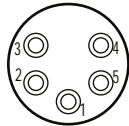
FEMALE

MCDLS-M

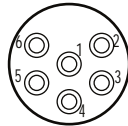
MCDLS-F



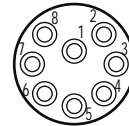
CONTACT  
CONFIGURATION  
(MP FACE VIEW)



5 CONTACT



6 CONTACT



8 CONTACT

MOUNTING TORQUE FOR MCIL/BH-FS/MP	not to exceed 100 in/lbs
MATED PRESSURE RATING (psi)	10,000
DUMMY PLUG FOR MCIL/BH-FS	MCDC-* -MP
DUMMY PLUG FOR MCIL/BH-MP	MCDC-* -FS
* Specify number of contacts.	